



GMT MONTHLY MEMBERSHIP PROGRESS REPORT

Results as of: 10/31/2019

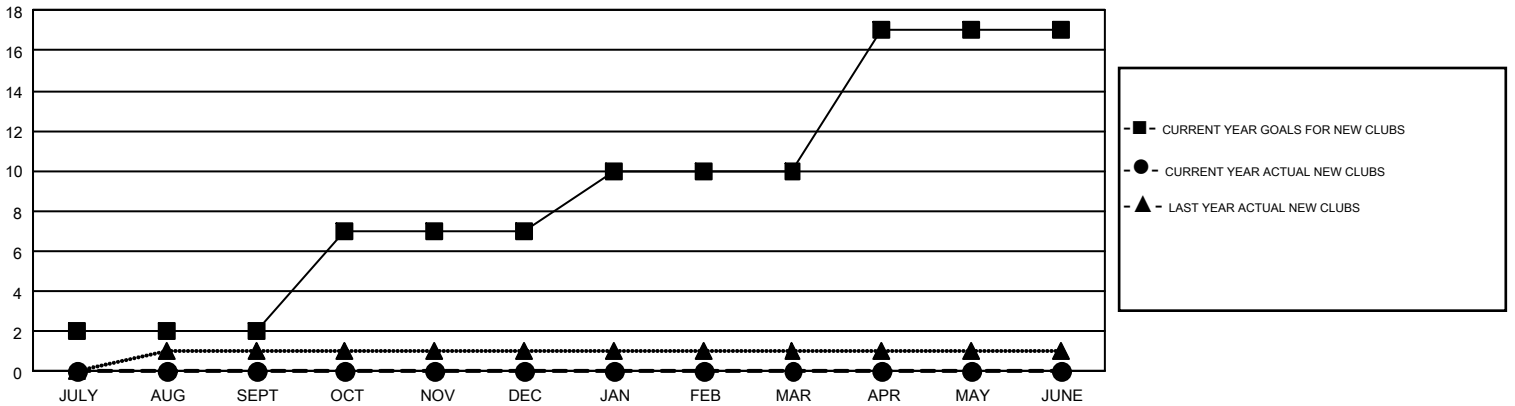
GMT Constitutional Area 1, Group G

GMT: OPEN

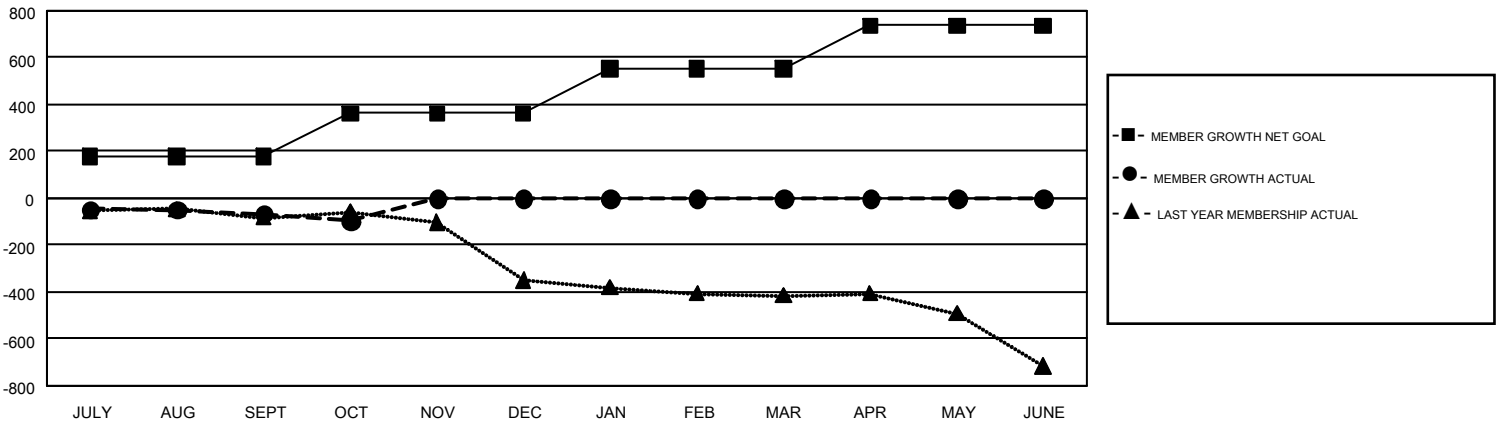
REPORT DOES NOT INCLUDE CLUBS IN UNDISTRICTED AREAS.

Clubs				Members			
RESULTS FOR 2019-2020				RESULTS FOR 2019-2020			
QUARTER	NEW CLUB GOAL	NEW CLUBS	DROPPED CLUBS	QUARTER	MEMBER GROWTH NET GOAL	MEMBER GROWTH ACTUAL	DROPPED MEMBERS ACTUAL (including transfers)
JULY/AUG/SEPT	2	0	3	JULY/AUG/SEPT	177	244	271
OCT/NOV/DEC	5	0	0	OCT/NOV/DEC	185	90	114
JAN/FEB/MAR	3	0	0	JAN/FEB/MAR	189	0	0
APR/MAY/JUNE	7	0	0	APR/MAY/JUNE	186	0	0

GOALS AND ACTUAL NEW CLUBS CUMULATIVE



GOALS AND ACTUAL MEMBERS CUMULATIVE



DROPPED CLUBS: 3	145 CLUBS OF 589 ADDED 1 OR MORE NEW MEMBERS	GENDER DISTRIBUTION MALE 9,602 (70.73%) FEMALE 3,974 (29.27%)
DROPPED MEMBERS DECEASED 60 CLUB CANCELLED 10 OTHER 315 TOTAL 385	CLICK HERE FOR CUMULATIVE MEMBERSHIP DATA	TOTAL FAMILY UNIT MEMBERS 2,828 FAMILY MEMBERS PAYING HALF DUES 1,438